

APPLESEED COMMUNITY MENTAL HEALTH CENTER

2017 Annual Report



APPLESEED COMMUNITY MENTAL HEALTH CENTER

**ACMHC WILL DELIVER EXEMPLARY
CLIENT-CENTERED MENTAL HEALTH, ABUSE
RECOVERY AND HOUSING SERVICES THAT
EMPOWER CLIENTS AND FAMILIES TO LIVE
HEALTHY, WHOLE AND PRODUCTIVE LIVES.**



ADULT MENTAL
HEALTH
SERVICES



YOUTH MENTAL
HEALTH
SERVICES



COUNSELING SERVICES
FOR ALL AGES
(YOUTH, ADULT)

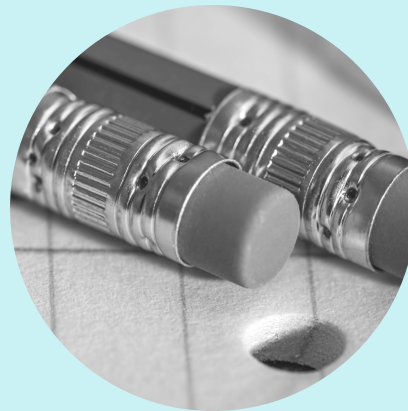


CRISIS SERVICES,
HOTLINE

APPLESEED SERVICES



HOUSING



SCHOOL
COMMUNITY
LIAISONS



DOMESTIC VIOLENCE
AND RAPE CRISIS
SERVICES



SUPPORTED
EMPLOYMENT

APPLESEED CRISIS SERVICES



1,281

INDIVIDUALS WERE
ASSISTED

584 CRISIS
ASSESSMENTS
WERE COMPLETED



2,974 INDIVIDUALS
MADE 4,529
CRISIS CALLS



86%

OF STUDENTS WITH ACADEMIC ISSUES SHOWED ACADEMIC IMPROVEMENT WITH GRADES AND HOMEWORK COMPLETION



2,023

STUDENTS WERE SERVED



SCHOOL AND COMMUNITY LIAISON PROGRAM

88%

OF STUDENTS WITH PROBLEM BEHAVIORS SHOWED DECREASED PROBLEMATIC BEHAVIORS/VISITS TO THE PRINCIPAL'S OFFICE



88%

OF STUDENTS WITH ATTENDANCE ISSUES SHOWED INCREASED AND IMPROVED ATTENDANCE



RAPE CRISIS DOMESTIC VIOLENCE SAFE HAVEN

1,871

DAYS OF CARE
PROVIDED



441

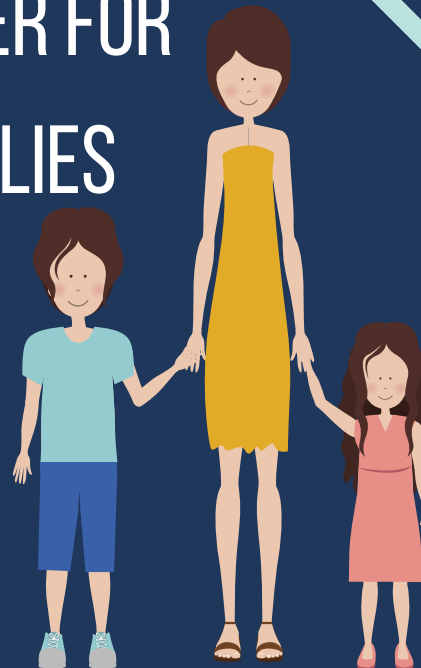
CRISIS CALLS ANSWERED

PROVIDED
SHELTER FOR

24 FAMILIES

&

35 INDIVIDUALS



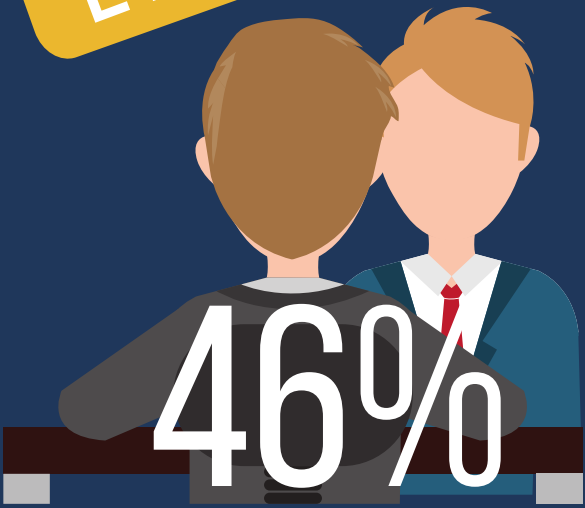
SAFE HAVEN PROVIDED
EDUCATION FOR

1,242

INDIVIDUALS



SUPPORTED
EMPLOYMENT



OF THOSE PARTICIPATING IN
THE PROGRAM WERE
EMPLOYED AT SOME POINT
DURING THE YEAR.

26

DIFFERENT EMPLOYERS WERE INVOLVED WITH
SUPPORTIVE EMPLOYMENT THIS YEAR



HOUSING SERVICES



HOUSED **136** HOMELESS ASHLAND COUNTY RESIDENTS

APPLESEED

RAPID REHOUSING
PROGRAM HOUSED

33 FAMILIES
&
93 INDIVIDUALS



12 INDIVIDUALS
& **3** FAMILIES



PERMANENT SUPPORTIVE
HOUSING PLUS CARE

CRISIS HOUSING PROGRAM HOUSED



11 INDIVIDUALS

BEGINNING
ANEW
PROGRAM

11 INDIVIDUALS

HOUSES HOMELESS
INDIVIDUALS WITH
QUALIFYING MENTAL
HEALTH DIAGNOSIS

MENTAL HEALTH SERVICES

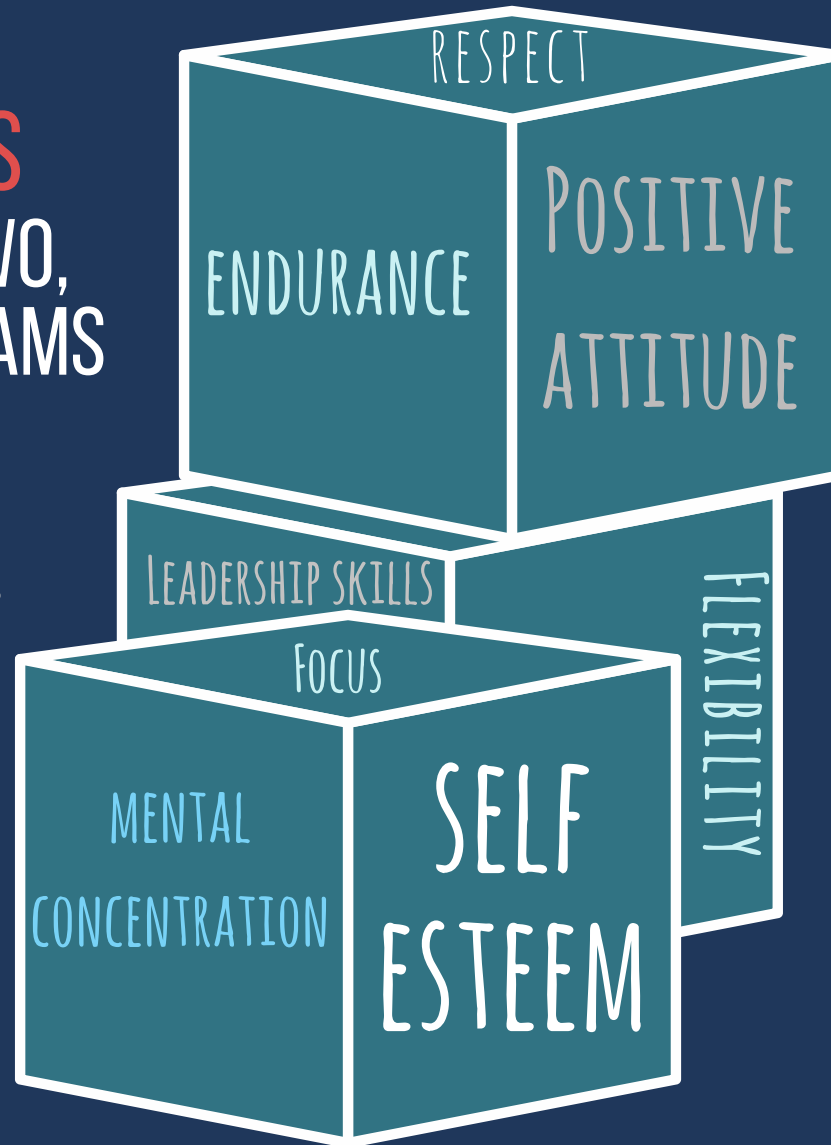
2,298



INDIVIDUALS SERVED IN
OUTPATIENT MENTAL
HEALTH SERVICES

ALTERNATIVE PROGRAMMING FOR ADHD

**14 YOUTH &
18 PARENTS**
BENEFITED FROM TWO,
6 WEEK LONG PROGRAMS



AN ADDITIONAL
20 YOUTH
BENEFITED FROM
A SERIES OF
STRUCTURED
GROUPS THROUGH
**RISING STAR
MARTIAL
ARTS**

KEEPING FAMILIES STRONG PROGRAM

FUNDED BY THE UNITED WAY OF ASHLAND COUNTY



SERVED **70**
FAMILIES

SUPPORTING
PARTNERSHIPS TO
ASSURE
READY
KIDS



SERVED
25 **FAMILIES**

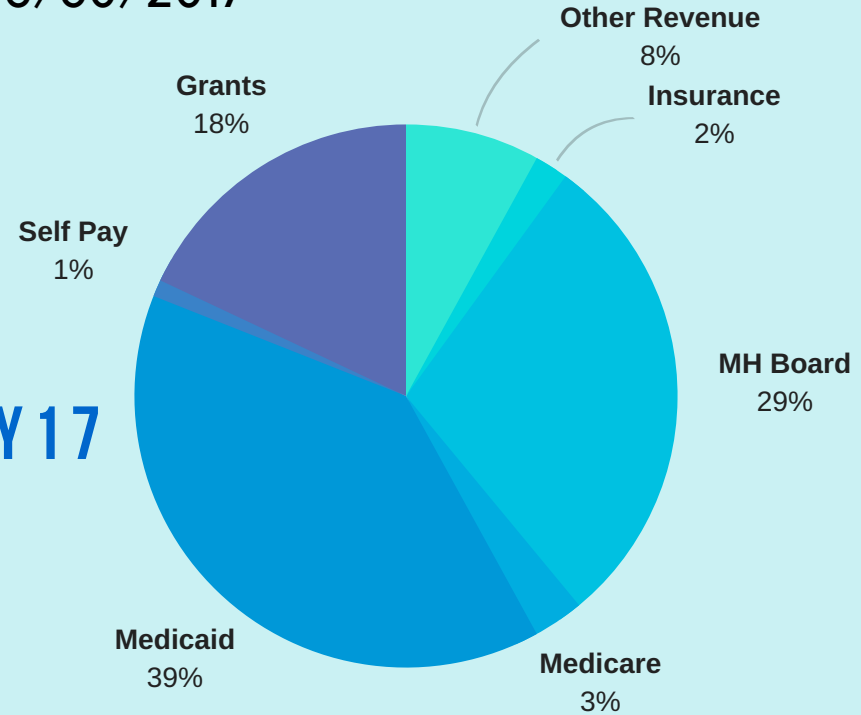
APPLESEED COMMUNITY MENTAL HEALTH CENTER STATEMENT OF REVENUES AND EXPENDITURES

FISCAL YEAR ENDED 6/30/2017

REVENUES

| | |
|-----------------------|---------------------|
| MEDICAID | \$ 1,822,770 |
| MENTAL HEALTH BOARD | 1,370,057 |
| GRANTS | 866,662 |
| OTHER REVENUES | 361,097 |
| MEDICARE | 118,290 |
| INSURANCES | 79,608 |
| SELF PAY | 63,860 |
| TOTAL REVENUES | \$ 4,682,344 |

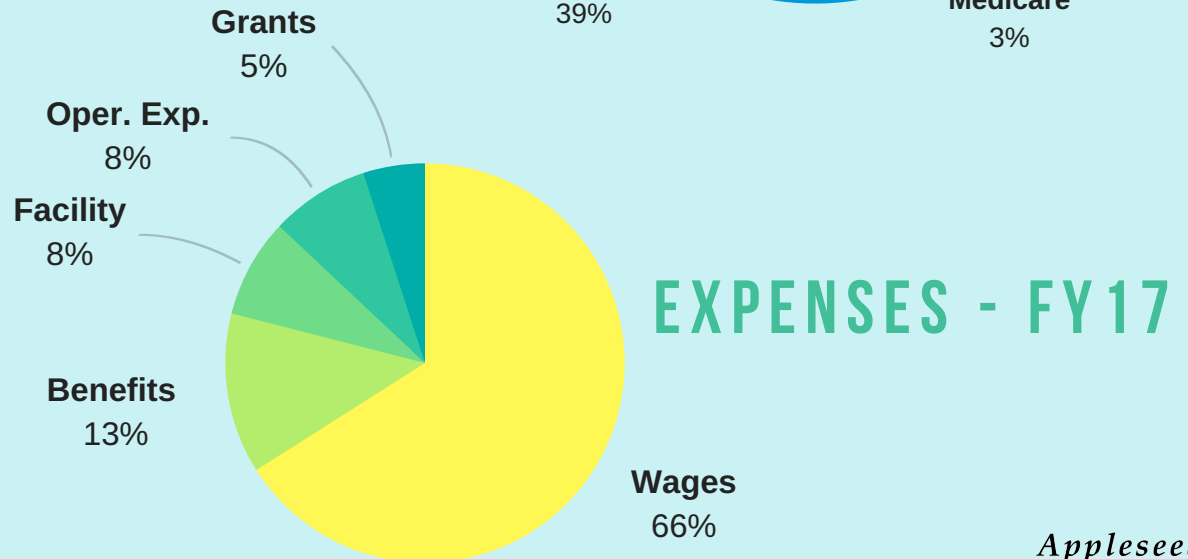
REVENUES - FY 17



EXPENDITURES

| | |
|------------------------|---------------------|
| WAGES | \$ 2,974,311 |
| BENEFITS | 584,609 |
| FACILITIES | 364,035 |
| OPERATING EXPENDITURES | 603,026 |
| TOTAL REVENUES | \$ 4,525,981 |

NET REVENUES OVER EXPENDITURES \$ 156,363



EXPENSES - FY 17

CONTACT INFORMATION

OFFICE: (419) 281-3716

CRISIS LINE: (419) 289-6111

WWW.APPLESEEDMENTALHEALTH.COM

