
Appleseed Community Mental Health Center

2018 Annual Report



FOREWORD

On behalf of the staff, administration, and board of Appleseed Community Mental Health Center I want to thank the Ashland County community for allowing our agency to be a partner with you. This annual report is one way for us to tell the story of the ways we seek to reach and serve the citizens of our wonderful county and surrounding area. At Appleseed it is our primary mission is to walk with families and individuals along their journey to live healthy, whole, and productive lives. We do this by offering comprehensive and integrated behavioral health, housing, outreach & prevention, substance-use disorder, and victim services.

For those of you residing in Ashland County, or the surrounding area, please know that Appleseed Community Mental Health Center and all of its programs are here to assist you. We are eager to walk with you through life's ups and downs like we have done with thousands of others.



**Jerry Strausbaugh EdD LPCCS
Executive Director Appleseed CMHC**

Appleseed Board Members



Steve Workman - *Chair*

Ashland City Council Ward 1, President
Payroll Specialist Wenco Wendy's

Jeff Russell Ph.D. - *Vice Chair*

Professor Ashland University
College of Business and Economics

Keith Tyson - *Secretary*

Pastor Ashland Brethren in Christ

David Marcelli

Chief of Police for City of Ashland

Lisa Stitzlein

Retired Registered Dietitian
Retired Diabetes Educator

Jerry Seiter

Samaritan Hospital Foundation

Ester Hong

Community member/advocate

Karen Schwan

Ohio Health Cardiac Nurse Practitioner

Bob Beer

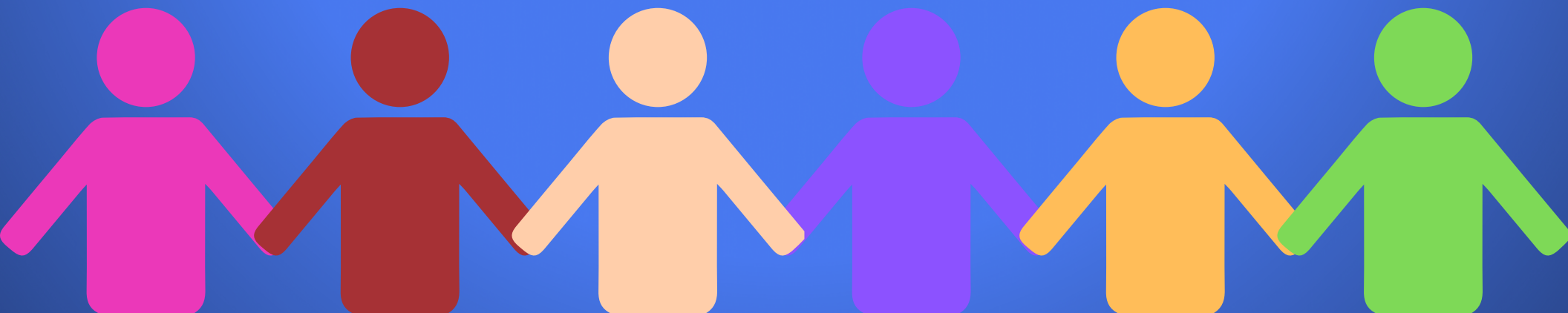
President, SDG Publishing, Inc.

Tammy Taylor

Ashland Ohio VFW
Persons Served Advocate

Appleseed Community Mental Health Center

Appleseed walks with families and individuals on their journey to live healthy, whole, and productive lives by offering comprehensive and integrated behavioral health, housing, outreach & prevention, substance-use disorder, and victim services.





Crisis Services
Hotline



School and Community
Liaisons



Domestic Violence and
Rape Crisis Services



Supported Employment



Adult Mental
Health Services

APPLESEED SERVICES



Youth Mental
Health Services



Housing



Counseling Services
for all Ages (Youth, Adult)



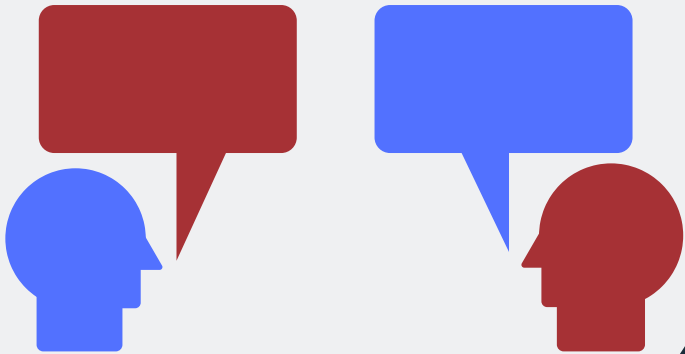
Kindergarten
Readiness



Substance Use
Disorder

2,941

**CALLS WERE DEVOTED TO EDUCATION,
CONSULTATION AND REFERRAL**



Appleseed Crisis Services



3,209

**Individuals
made 4,648
Crisis Calls**

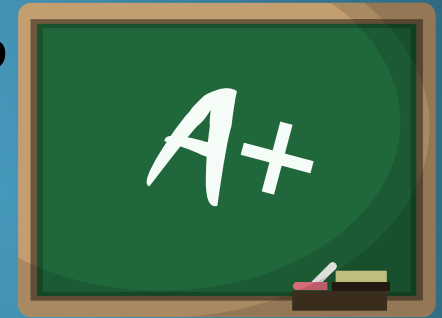
1,707

calls were devoted to Crisis needs



84%

OF STUDENTS WITH
ACADEMIC ISSUES SHOWED
ACADEMIC IMPROVEMENT
WITH GRADES AND
HOMEWORK COMPLETION



88%

OF STUDENTS WITH PROBLEM
BEHAVIORS SHOWED
DECREASED PROBLEMATIC
BEHAVIORS/VISITS TO THE
PRINCIPAL'S OFFICE

**SCHOOL AND
COMMUNITY LIAISON
PROGRAM**

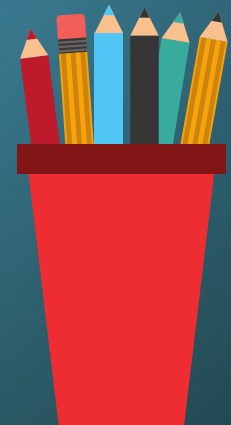
2,021

STUDENTS WERE SERVED



83%

OF STUDENTS WITH
ATTENDANCE ISSUES
SHOWED INCREASED AND
IMPROVED ATTENDANCE



RAPE CRISIS DOMESTIC VIOLENCE SHELTER SAFE HAVEN



1,925

DAYS OF CARE PROVIDED

SAFE HAVEN PROVIDED SERVICES TO

7,997

INDIVIDUALS



395

CRISIS CALLS ANSWERED

PROVIDED

EMERGENCY SHELTER FOR ADULTS

30

&

21

YOUTHS





**OUTREACH AND PREVENTION
SERVICES HELPED**

6,596
INDIVIDUALS

**OTHER SUPPORT
SERVICES HELPED**

955
INDIVIDUALS



RAPE CRISIS DOMESTIC VIOLENCE SHELTER SAFE HAVEN



**Supported
Employment**

72

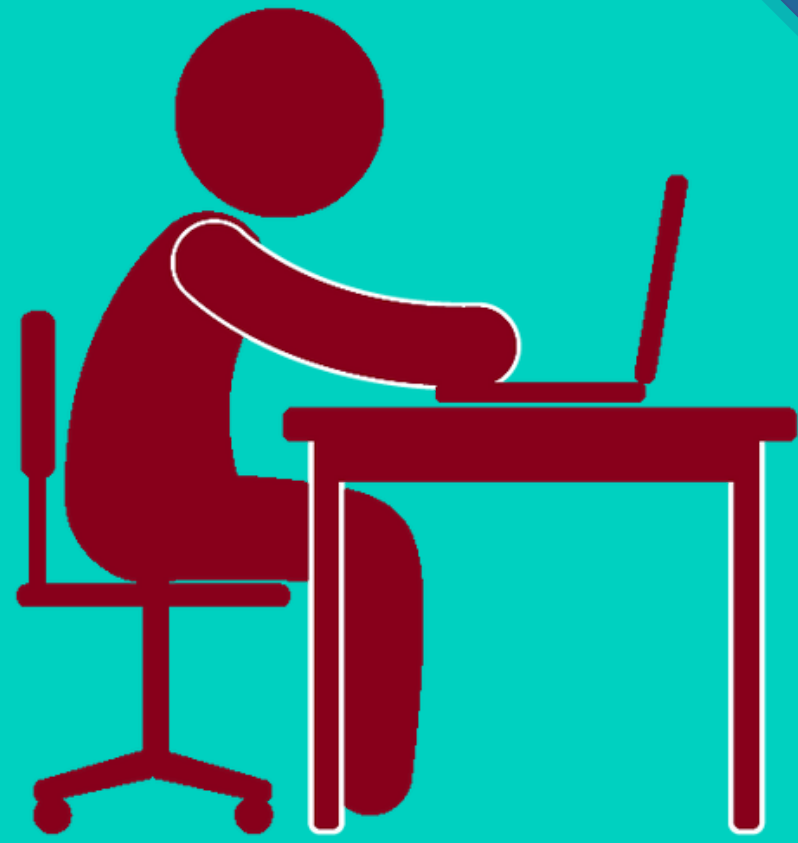
PEOPLE STRUGGLING WITH
MENTAL HEALTH AND/OR
ADDICTIONS PARTICIPATED
IN THE SUPPORTED
EMPLOYMENT PROGRAM

52%

OF PARTICIPANTS OF THE
PROGRAM WERE
EMPLOYED AT SOME
POINT DURING THE YEAR

29

EMPLOYERS WERE INVOLVED
WITH SUPPORTIVE
EMPLOYMENT THIS YEAR



Mental
Health
Services

2,436



Individuals Served in
**OUTPATIENT MENTAL
HEALTH SERVICES**



APPLESEED

**RAPID REHOUSING
PROGRAM HOUSED**

119

Individuals

Housing Services

HOUSED 28 PERSONS EXPERIENCING HOMELESSNESS

**TRANSITIONAL HOUSING
PROGRAM PROVIDED
HOUSING FOR 5
FAMILIES**

**15 INDIVIDUALS
RECEIVED
PERMANENT SUPPORTIVE
HOUSING PLUS CARE**



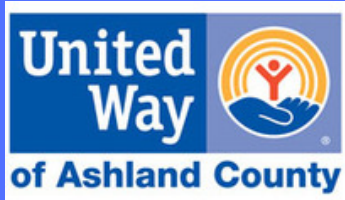
**BEGINNING ANEW
PROGRAM**

17  **INDIVIDUALS**

**WERE HOUSED WHO
EXPERIENCED A
QUALIFYING MENTAL
HEALTH DIAGNOSIS**

KEEPING FAMILIES STRONG PROGRAM

FUNDED BY THE UNITED WAY OF ASHLAND COUNTY



SERVED
70
FAMILIES

SUPPORTING
PARTNERSHIPS TO
ASSURE
READY
KIDS



SERVED
25 Families

ALTERNATIVE PROGRAMMING FOR ADHD

**22 YOUTH &
28 PARENTS**

BENEFITED FROM TWO,
6 WEEK LONG PROGRAMS



Focus

Respect

**Positive
Attitude**

**Self
Esteem**

Endurance

Flexibility

**Mental
Concentration**

**Leadership
Skills**

AN ADDITIONAL

46 YOUTH

BENEFITED FROM A
SERIES OF
STRUCTURED
GROUPS THROUGH

Rising Stars

Martial

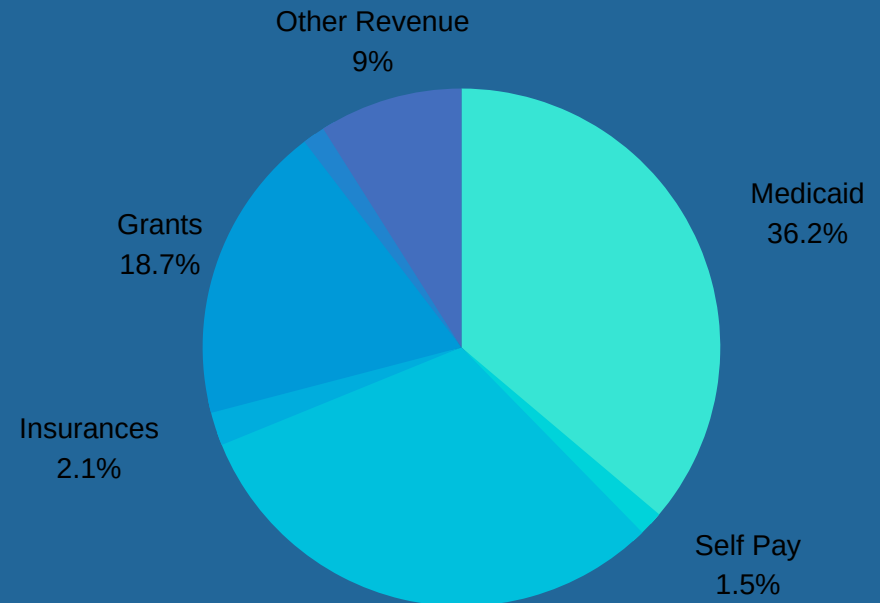
Arts

APPLESEED COMMUNITY MENTAL HEALTH CENTER STATEMENT OF REVENUE AND EXPENDITURES

FISCAL YEAR ENDED 6/30/2018, UNAUDITED

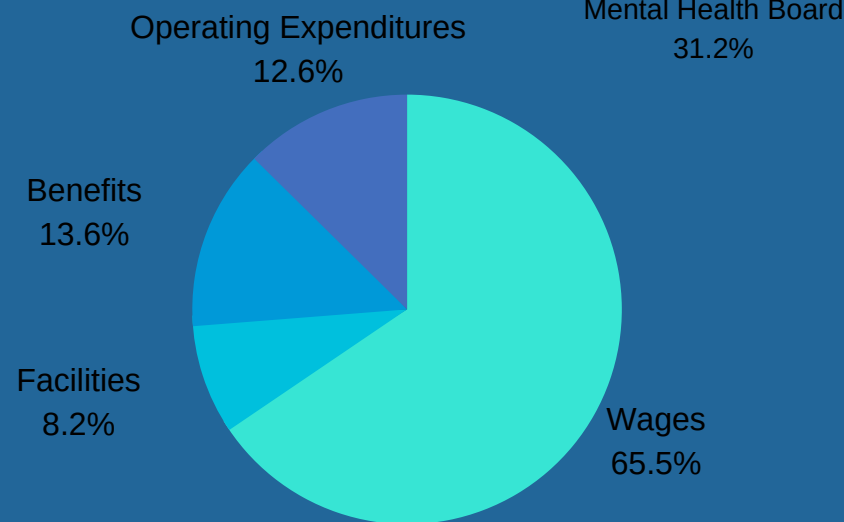
REVENUES

MEDICAID	\$ 1,663,157
MENTAL HEALTH BOARD	1,433,379
GRANTS	859,706
OTHER REVENUES	412,747
MEDICARE	64,694
INSURANCES	95,655
SELF PAY	70,039
TOTAL REVENUES	4,599,377



EXPENDITURES

WAGES	\$ 3,171,233
BENEFITS	660,055
FACILITIES	398,639
OPERATING EXPENDITURES	610,535
TOTAL EXPENDITURES	4,840,462



THANK YOU TO OUR PARTNERS

I say to our team on a regular basis that our agency is only as strong as our partnerships. We are thankful to be a contract agency with the Ashland County Mental Health and Recovery Board, and a partner agency of the United Way of Ashland County and the Mohican Area Community Fund. In addition, we are blessed to partner with Ashland City and County school districts, Ashland County and City government, RedBird Resilient, the Ashland County Community Foundation, Ashland University, University Hospitals, Akron Children's Hospital, The State of Ohio, Ashland City Schools Alumni Foundation, Samaritan Hospital Foundation, and so many other organizations and individuals.

**Jerry Strausbaugh EdD LPCCS
Executive Director Appleseed CMHC**

Mohican Area Community Fund



Hometown Charity Starts Here!™



Ashland County
Community Foundation

...for generations to come

REDBIRD
RESILIENT

MENTAL HEALTH
AND RECOVERY
BOARD



of ASHLAND COUNTY



University
Hospitals

United
Way



of Ashland County

CONTACT INFORMATION

OFFICE: (419) 281-3716

CRISIS LINE: (419) 281-6111

SAFE HAVEN HOTLINE: (419) 289-8085

WWW.APPLESEEDMENTALHEALTH.COM

WWW.SAFEHAVENOFASHLAND.ORG

Appleseed 
Community Mental Health Center